

MyLabTMSeven

Productivity in Real-time

Seven

"Excellence is doing a common thing in an uncommon way"

Albert Einstein

The logo for esaote, featuring a stylized 'e' inside a circle followed by the word 'saote' in a bold, red, sans-serif font.

More in Less





MyLabTMSeven

Esaote introduces MyLabTM Seven, the new ultrasound system designed around Esaote's innovative new Productivity-Oriented Platform (POP).

MyLabSeven is an innovative ultrasound system able to deliver high-class performance and compact size.

The wide 16:10 LCD monitor and large sized high-definition touch-screen reflect the main philosophy of the system: Productivity in Real-time, means better diagnosis in less time.

MyLabSeven also includes built-in wireless access to provide easy and fast data transfer. This leads to an improved user comfort and clinical outcome as well as department throughput and efficiency.

MyLabSeven is the right choice to drive healthcare innovation.

esaote

Ergonomics

- Wide image size
- Articulated monitor arm
- Easy rotation and height adjustment
- Sliding alphanumeric keyboard



Simplicity

MyLab[™]Seven

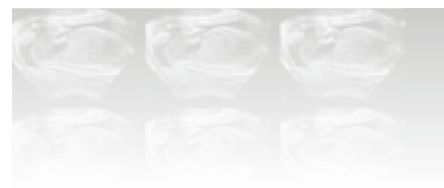
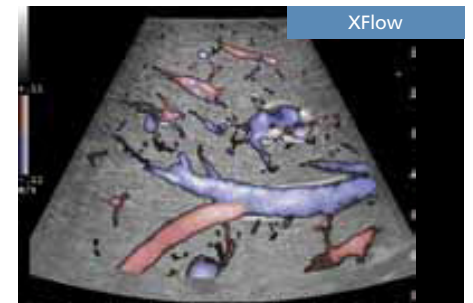
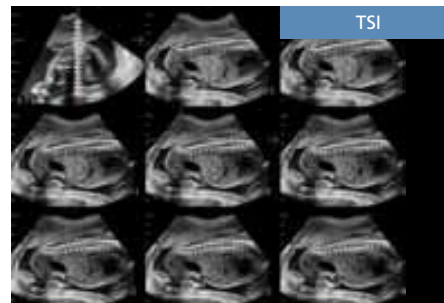
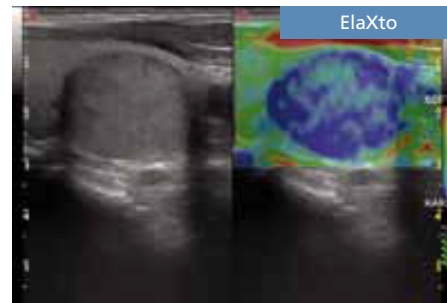
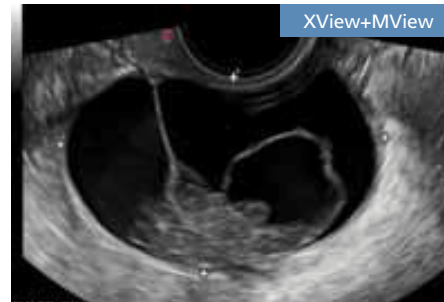
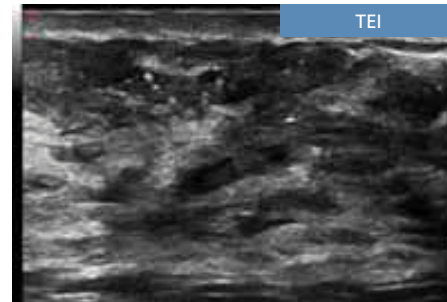
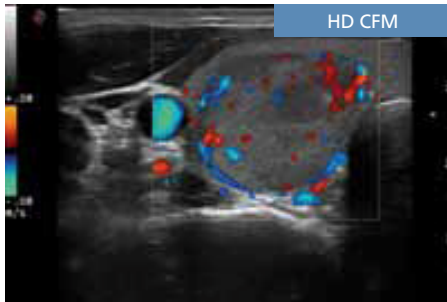
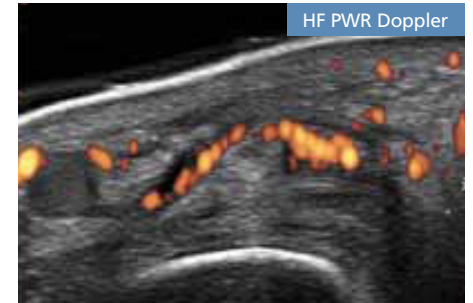
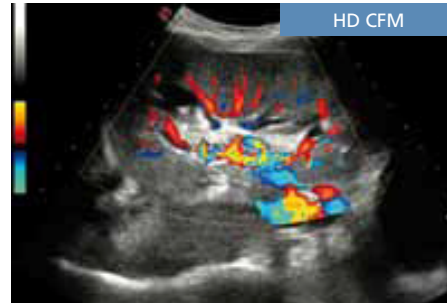


- Designed for productivity
- 4 probe connectors
- Wide range of transducers (2D, 3D)
- Compact footprint and easy mobility
- Stand-by battery

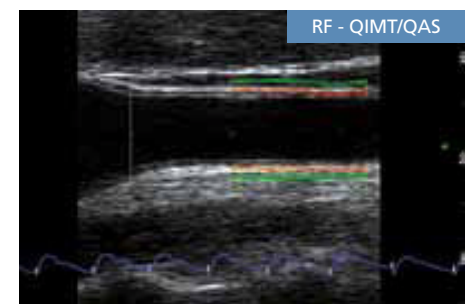
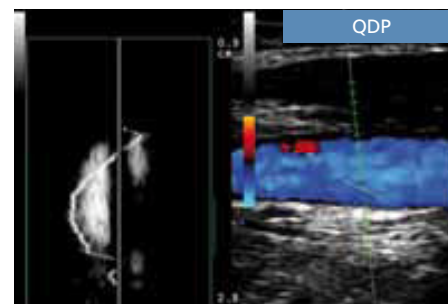
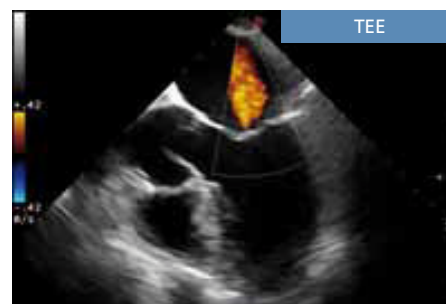
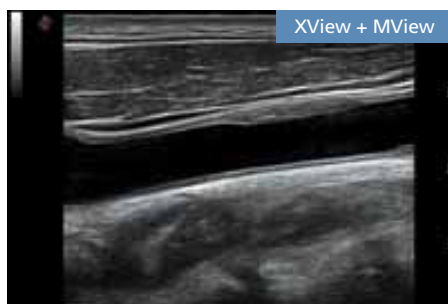
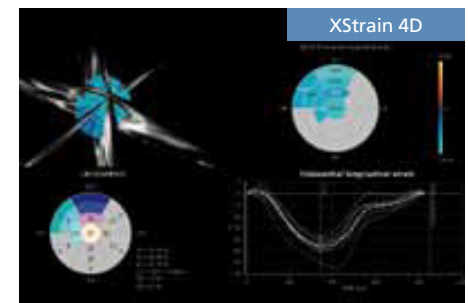
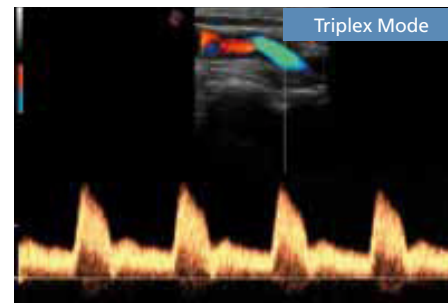
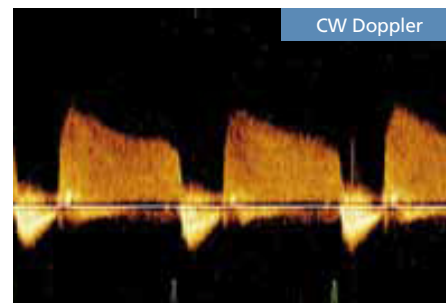
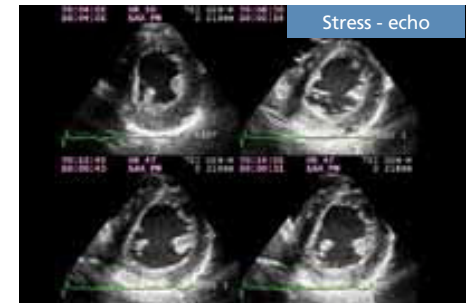
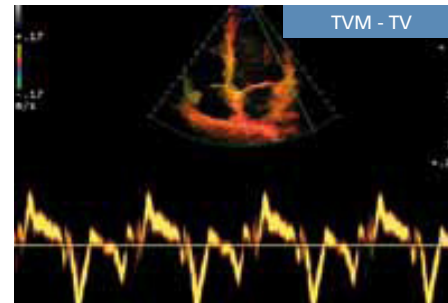
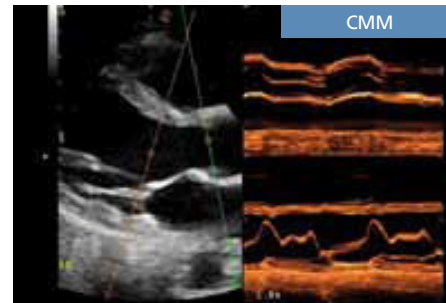
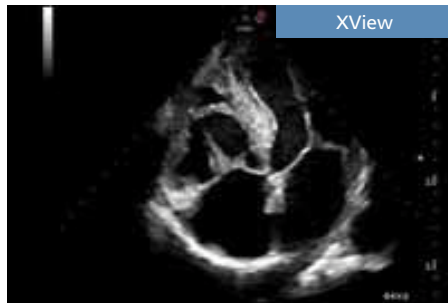


eSaote

Stunning Images within reach



improve diagnostic confidence





Your @Touch

e

A standard ultrasound system becomes a personal application-specific diagnostic tool.

Customized settings and multiple functions can be organized according to clinical practice and preferences and then easily recalled by just pressing a button.




Unparalleled throughput


MyLabTMSeven

The intelligent software and the large sized touch-screen allow unique features to be delivered with MyLabSeven. The Productivity-Oriented Platform is the core of the architecture: easy access, personalized settings and functions, standardized clinical protocols and immediate settings.

Custom setup

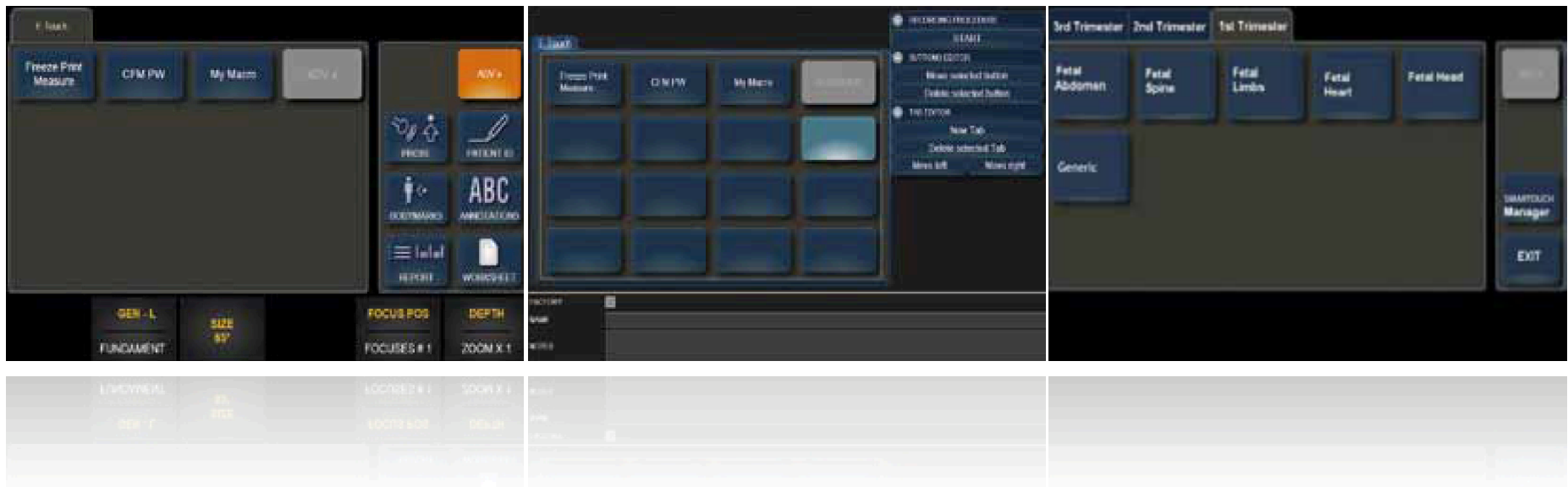
By pressing the  Touch button, the user can display the controls and functions that he really needs in clinical practice: improved comfort and reduced examination time.

MyMacro

 Touch dedicated session allows the user to record different macros. Based on any single user's needs and preferences, multiple functions can be included with just one touch: less keystrokes and faster diagnosis.

SmarTouch

Wide ranging image settings, user preferences and clinical targets, normally require time and attention. Smart-touch delivers dedicated settings for any anatomical district. Optimal images are displayed with just one touch.



iQProbes

- Active Matrix Composite Material
- Multiple Adaptive Layers
- Bi-Con Geometric Lens
- Heating Efficiency Control



appleprobe

MyLabSeven offers a wide range of iQ Probes. In addition to convex, linear and phased array, several special probes (such as endocavity, trans-esophageal, intraoperative, volumetric,...) can be connected.

MyLabSeven, thanks to four multi-size connectors, offers the compatibility with different type of probes. Examination can be comfortably performed, with the right tool and without any waste of time.



Wireless Ultrasound

MyLabTMSeven

- Extended export capability to PC (Windows®, Mac®) and mobile devices (tablets, smart-phones, etc ...)
- Easy networking, standard and wireless
- DICOM and IHE compliance

MyLabTMDesk³



The new app to visualize images and videos on mobile devices:



MyLab App





www.esaote.com

MyLabSeven™ Productivity in Real-time

"Excellence is doing a common thing in an uncommon way"
Albert Einstein



Windows® is a registered trademark of Microsoft Corporation
Mac® is a registered trademark of Apple Inc.



0051

Esaote S.p.A.

International Activities: Via di Caciolle, 15 50127 Florence, Italy, Tel. +39 055 4229 1, Fax +39 055 4229 208, international.sales@esaote.com

Domestic Activities: Via A. Siffredi, 58 16153 Genoa, Italy, Tel. +39 010 6547 1, Fax +39 010 6547 275, info@esaote.com

FRANCE Esaote France S.A.R.L. ZA du Bel Air 10, rue de Témara, 78105 Saint Germain en Laye Tel. +33 1 8204 8900, Fax +33 1 3061 7210 info@esaote.fr	GERMANY Esaote Biomedica Deutschland GmbH Max-Planck-Straße 27a 50858 Köln Tel. +49 2234 688 5600, Fax +49 2234 967 9628 info@esaote.de	SPAIN Esaote España S.A. Avda San Sebastian, s/n 08960 Sant Just Desvern, Barcelona Tel. +34 93 473 2090, Fax +34 93 473 2042 info@esaote.es	THE NETHERLANDS AND BELGIUM Esaote Benelux B.V. Philipsweg 1 6227 AJ Maastricht Tel. +31 43 3824650, Fax +31 43 3824651 benelux@esaote.nl	UK Esaote UK 14, Cambridge Science Park Milton Road, Cambridge, CB4 0FQ Tel. + 44 1223 424499, Fax + 44 709 288 0231 infoUK@esaote.com	NORTH AMERICA Esaote North America 8000 Castlaway Drive, Indianapolis, IN 46250 Tel. +1 317 813 6000, Fax +1 317 813 6600 inquire@esaoteusa.com
BRASIL Brazilian Direct Office Rua Tomas Carvalhal, 711 04006-001 São Paulo SP Tel. +55 11 2589 0533 Fax +55 11 2589 0527 leonardo.pili@esaote.com.br	ARGENTINA Esaote Latinoamérica S.A. San Martín 551, Cuerpo 'C', Piso 8, (C1004AAK) Buenos Aires Tel. +54 11 4326 1832, Fax: +54 11 4328 1245 info@esaote.com.ar	INDIA Esaote Asia Pacific Diagnostic Private Limited DLF IT Park, A - 44 & 45, Tower- C, Ground Floor, Sector- 62, Noida, Uttar Pradesh, India Pin Code: 201 301 Tel. +91 120 4732444, Fax +91 120 4750148 info@esaote.in	HONG KONG AND FAR EAST Esaote China Ltd 18/F, 135 Bonham Strand Trade Centre, 135 Bonham Strand, Sheung Wan, Hong Kong Tel. +852 2545 8386, Fax +852 2543 3068 esaote@esaotechina.co	CHINA Esaote Shenzhen Medical Equipment Room 2608, Tower B Beijing Global Trade Center 36 North Third Ring Road East, Dongcheng District, 100013, Beijing Tel. +86 010 58257766, Fax +86 010 52257760	RUSSIAN FEDERATION AND CIS Esaote S.p.A. 18 Leningradsky prospekt Off. 5 and 6, Moscow 125040 Tel. +7 495 232 0205, Fax +7 495 232 1833 esaotemoscw@yandex.ru

Specifications subject to change without notice.

Features, functions and accessories included in this brochure might be not yet released or approved in all the countries.

X4D, Elaxto, QAS, QIMT, QDP and XStrain 4D are not yet for sales in the USA.

The use of contrast agents in the USA is limited by FDA to left ventricle opacification and visualization of the left ventricular endocardial border.

