

Productivity in Real-time

Seven

WITH  
eHD  
Technology

 **CrystaLine**

*Maximizing the efficiency  
of ultrasound scanning*

 **saote**



### **Improved imaging in difficult to scan patients**

Major technical improvements provided by CrystaLine include the CPI Technology to increase depth of field, improving the imaging of deep structures in difficult-to scan individuals.

### **Adjustable imaging by the operator**

The new XView+ speckle reduction technology which can be adjusted by the operator is now available with CrystaLine. It produces an optimal personalized image for every single clinician in a wide range of applications.

### **Increased Diagnostic Confidence**

CrystaLine demonstrates extended configuration features, giving the physician the possibility to best perform in advanced procedures. It incorporates innovative solutions that now enable clinicians to confidently use ultrasound in several examinations.

### **Optimised Workflow**

CrystaLine is aiming on reduced examination time and better workflow by means of a wide range of automatic process functions for Imaging, Doppler, Post-Processing, Measurements, Archiving and Connectivity.





**eHD is the Esaote technology to innovate ultrasound imaging and improve the systems' use.**

It represents our attention to the diagnostic value, optimizing all the aspects of the chain a signal has to travel through, starting from the echo generated by the patient's body up to the arrival on the system's monitor. It maximizes the efficiency of ultrasound scanning, leaving the sonographer free to concentrate on the patient.

**The quality that improves your diagnostic confidence.**

# @HD Technology

**@HD**

iQ Probes



**@HD**  
Pulser



**@HD**  
Processing



**@HD**  
Doppler



**@HD**







## iQProbes

- Active Matrix Composite Material
- Multiple Adaptive Layers
- Bi-Con Geometric Lens
- Heating Efficiency Control

### MyLabSeven offers a wide range of iQ Probes

In addition to convex, linear and phased array, several special probes (such as endocavity, trans-esophageal, intraoperative, volumetric,...) can be connected.

MyLabSeven, thanks to four multi-size connectors, offers the compatibility with different type of probes. Examination can be comfortably performed, with the right tool and without any waste of time.



### Esaote appleprobe, an innovative approach in ergonomics

The appleprobe keeps hand and wrist in their natural alignment distributing the grip throughout the whole hand as One grips an apple. You can relieve tension on the fingers and the wrist, when not scanning, simply by keeping the probe between the fingers.

The appleprobe has been designed for both grip:

- innovative palm hold
- conventional pincer hold

# Your Diagnostic Confidence



The MyLab™ Seven is an innovative system able to deliver high-class performance in a compact size.

The Esaote eHD Technology reflects the main philosophy of this system: Productivity in Real-time.

This technology provides fast, optimized data transfer, which leads to an improved user comfort and clinical outcome as well as department throughput and competence.

The MyLab™Seven is the right choice to maximize the efficiency of ultrasound scanning.

# Ergonomics

User comfort and design reflected in diagnostic confidence and clinical results.

Esaote has always been recognized as a leader in ergonomics, design and simplicity of use. Our design concept recognizes that the sonographer has the most important role in clinical workflow. The comfort and satisfaction of the users is reflected in increased diagnostic confidence.



- Wide image size
- Articulated monitor arm
- Easy rotation and height adjustment
- Sliding alphanumeric keyboard





# Simplicity

- Designed for productivity
- 4 probe connectors
- Wide range of transducers (2D, 3D)
- Compact footprint and easy mobility
- Stand-by battery



MyLabSeven™

eTouch



**A standard ultrasound system becomes a personal application-specific diagnostic tool.**

Customized settings and multiple functions can be organized according to clinical practice and preferences and then easily recalled by just pressing a button.





# Extending productivity

The intelligent software and the large sized touch-screen allow unique features to be delivered with MyLabSeven.

The Productivity-Oriented Platform is the core of the architecture: easy access, personalized settings and functions, standardized clinical protocols and immediate settings.

## eTouch

By pressing the eTouch button, the user can display the controls and functions that he really needs in clinical practice: improved comfort and reduced examination time.

eTouch dedicated session allows the user to record different macros. Based on any single user's needs and preferences, multiple functions can be included with just one touch: less keystrokes and faster diagnosis.

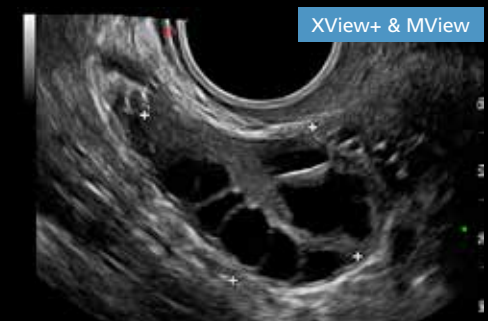
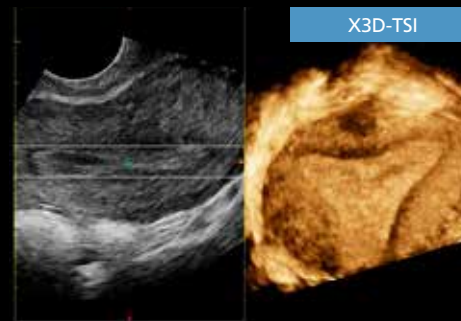
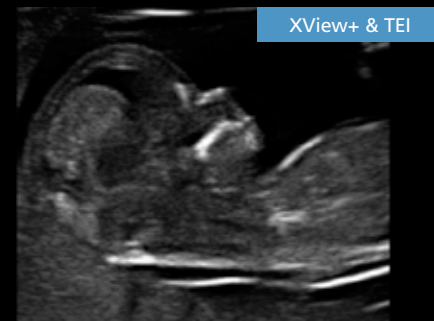
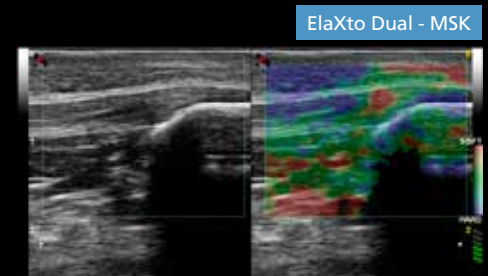
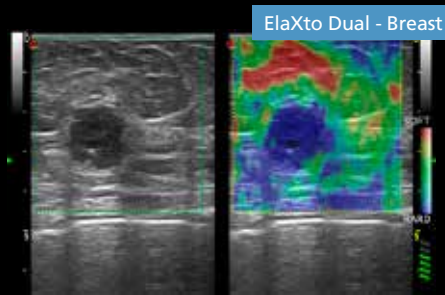
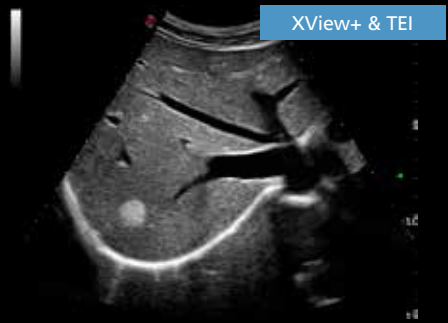
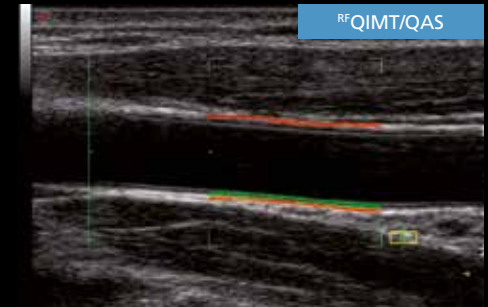
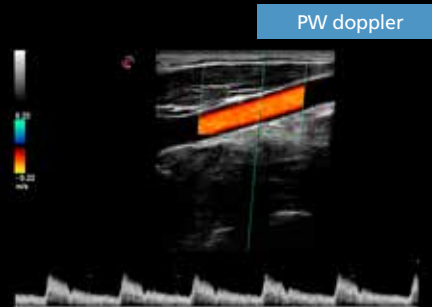
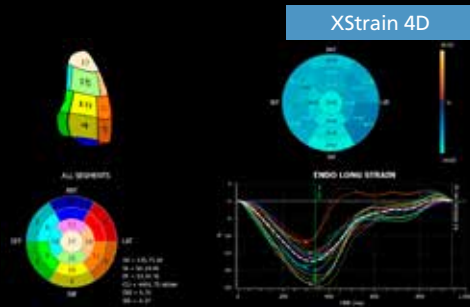
## SmartTouch

Wide ranging image settings, user preferences and clinical targets, normally require time and attention. Smart-touch delivers dedicated settings for any anatomical district. Optimal images are displayed with just one touch.



# Stunning Images within reach

MyLabSeven™



# Wireless Ultrasound

- Extended export capability to PC (Windows®, Mac®) and mobile devices (tablets, smart-phones, etc ...)
- Easy networking, standard and wireless
- DICOM and IHE compliance



Mylab App

The new app to  
visualize images  
and videos on  
mobile devices







www.esaote.com

MyLab<sup>TM</sup>Seven

Productivity in Real-time

WITH  
**eHD**  
Technology

 **CrystaLine**

*Maximizing the efficiency of ultrasound scanning*

160000012MAK Ver. 01



Windows® is a registered trademark of Microsoft Corporation  
Mac® is a registered trademark of Apple Inc.



#### Esaote S.p.A.

Via di Caciolle, 15 50127 Florence, Italy, Tel. +39 055 4229 1, Fax +39 055 4229 208, international.sales@esaote.com  
Via A. Siffredi, 58 16153 Genoa, Italy, Tel. +39 010 6547 1, Fax +39 010 6547 275, info@esaote.com

FRANCE  
Esaote Medical SAS  
ZA du Bel Air  
10, rue de Témara, 78105 Saint-Germain-en-Laye  
Tel. +33 1 8204 8900, Fax +33 1 3061 7210  
info@esaote.fr

GERMANY  
Esaote Biomedica Deutschland GmbH  
Max-Planck-Straße 27a  
50858 Köln  
Tel. +49 2234 688 5600, Fax +49 2234 967 9628  
info@esaote.de

SPAIN  
Esaote España S.A.  
C/. Pont Reixat, 5  
08960 Sant Just Desvern, Barcelona  
Tel. +34 93 473 2090, Fax +34 93 473 2042  
info@esaote.es

THE NETHERLANDS AND BELGIUM  
Esaote Benelux B.V.  
Philipsweg 1  
6227 AJ Maastricht  
Tel. +31 43 3824650, Fax +31 43 3824651  
benelux@esaote.nl

UK  
Esaote UK  
14, Cambridge Science Park  
Milton Road, Cambridge, CB4 0FQ  
Tel. + 44 1223 424499, Fax + 44 709 288 0231  
infoUK@esaote.com

NORTH AMERICA  
Esaote North America  
8000 Castleway Drive,  
Indianapolis, IN 46250  
Tel. +1 317 813 6000, Fax +1 317 813 6600  
inquire@esaoteusa.com

BRASIL  
Brasilian Direct Office  
Rua Tomas Carvalhal, 711  
04006-001 São Paulo SP  
Tel. +55 11 2789 0400 Fax +55 11 2789 0432  
comercial@esaote.com.br

ARGENTINA  
Esaote Latinoamérica S.A.  
San Martín 551, Cuerpo 'C', Piso 8, (C1004AAK) Buenos Aires  
Tel. +54 11 4326 1832, Fax: +54 11 4328 1245  
info@esaote.com.ar

INDIA  
Esaote Asia Pacific Diagnostic Private Limited  
DLF IT Park, A - 44 & 45, Tower- C, Ground Floor,  
Sector- 62, Noida, Uttar Pradesh, India  
Pin Code: 201 301  
Tel. +91 120 4732444, Fax +91 120 4750148  
info@esaote.in

HONG KONG AND FAR EAST  
Esaote China Ltd  
18/F, 135 Bonham Strand Trade Centre,  
135 Bonham Strand, Sheung Wan, Hong Kong  
Tel. +852 2545 8386, Fax +852 2543 3068  
esaote@esaotechina.com

CHINA  
Esaote Shenzhen Medical Equipment  
Room 2608, Tower B  
Beijing Global Trade Center  
36 North Third Ring Road East,  
Dongcheng District, 100013, Beijing  
Tel. +86 010 58257766, Fax +86 010 52257760

RUSSIAN FEDERATION AND CIS  
Esaote S.p.A.  
18 Leningradsky prospekt  
Off. 5 and 6, Moscow 125040  
Tel. +7 495 232 0205, Fax +7 495 232 1833  
esaotemoscow@yandex.ru

Technology and features are system/configuration dependent.  
Specifications subject to change without notice. Information might refer to products or modalities not yet approved in all countries.  
For further details, please contact your Esaote sales representative.

